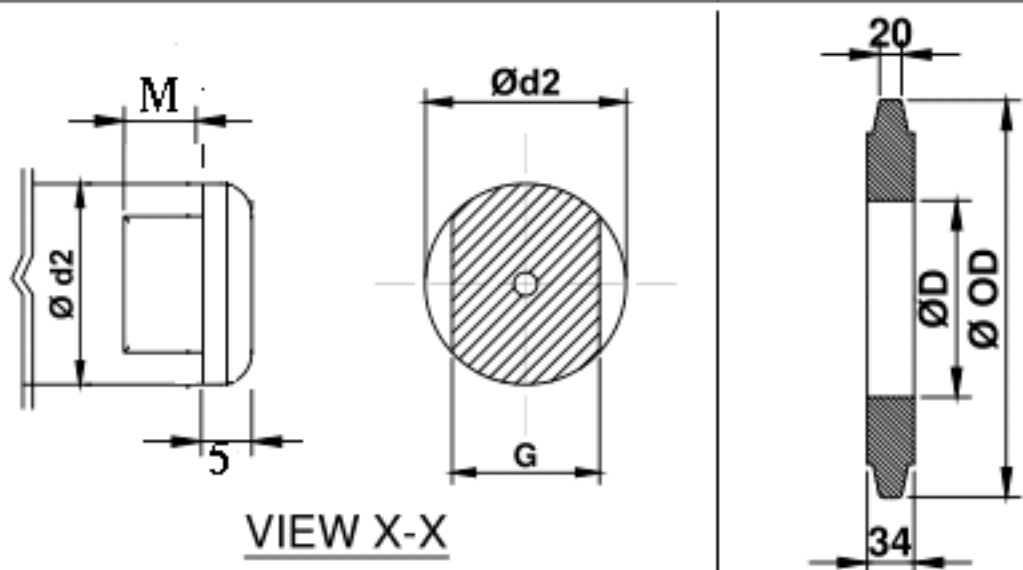


Technical/ Dimensional details	
DIMENSION	TOLERANCES AS PER IS
Diameter	0.5 mm IS:9295
Thickness	± 10% IS:9295
Length	± 1 mm

ITEM NO.	QTY (Nos.)	DESCRIPTION	MATERIAL	SPECIFICSTION
1	1	TUBE	ERW	IS:9295, Gr.YST 210
2	1	SHAFT/ SPINDLE	C40	IS 1570
3	2	BEARING	Deep Groove Ball Bearing	SKF/ FAG
4	2	BEARING HOUGING	CRCA SEET	IS 513 DD
5	4	EXTERNAL CIRCLIP	SPRING STEEL	
6	2	INNER SEAL	Nylon-6	
7	2	INNER LABYRINTH	Nylon-6	
8	2	OUTER LABYRINTH	Nylon-6	
9	2	DUST COVER	Nylon-6/CRCA	
10	2	RAIN CAP	Nylon-6	
11	17	RUBBER DISC	RUBBER	SHORE HARDNESS 50 - 60
12	2	LOCKING RING	STEEL	



VIEW X-X

ALL DIMENSIONS ARE IN MM

ITEM NO.	DESCRIPTION	Ø D	Ø OD	L	L1	L2	Ø d1 (Max.)	Ø d2	M	G	T	BEARING NO.	QTY (Nos.)
10	IMPACT ROLLER FOR 1600 mm BELT WIDTH	115	194	600	617	633	40	35	18	28	4.85	6207	

P.O. NO. :-	
INTERNAL SEALING ARRANGEMENT OF IMPACT ROLLER	
DRAWING NO. :-	
CHECKED BY :-	APPROVED BY :-

