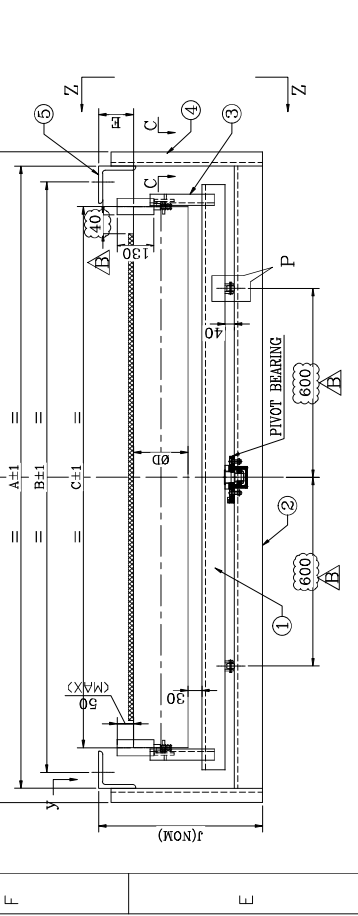
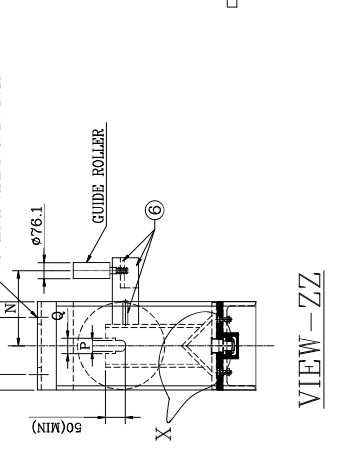
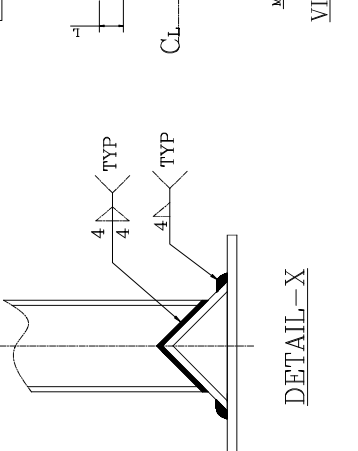
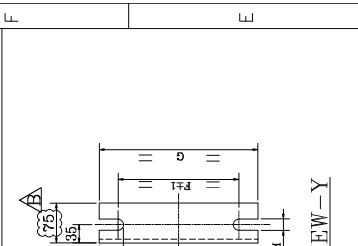


BASIC DATA:-
 CAPACITY:-2600 T.P.H
 DUTY:-CONTINUOUS
 MATERIAL:-COAL
 LUMP SIZE:-(-)100MM (-)20MM
 BELT SPEED:- 3.14 M/SEC (MAX)



SI NO	B/W	A	B	C	D ϕ	E \pm 3	F	G	J	P	Q	L	M	N	SHAFT DIA. AT BEARING	SHAFT DIA. AT BEARING	BRG.NO.	BRG.MAKE	WT. OF ROTATING PARTS (KG)	ASSYMT. OF IDLER ASSY(KG)	Z ϕ BOLT	TOTAL QTY
1	1800	2170	2100	2000	1524	75	65	150	447	29	38	53.5	22	150	35	35	6207-Z	SKF/FAG/NBC	36	135	M20	394 SETS

SL.NO	TYPE	TYPE OF PREPARATION	REFERENCE STANDARD
1	Grade of Surface Preparation	Power Tool Cleaning Wire Wheel / Wire Brush	SSS-3
2	Primer Coat	Light Grey Zinc Chromate as per IS-2072 / IS-1294	Total DFT (microns)
3	Final Coat	Spinach Green paint as per IS-2072 / IS-1294	2 35 70
4	Primer Coat	Light Grey Zinc Chromate as per IS-2072 / IS-1294	1 35 25-35
5	Final Coat	Spinach Green paint as per IS-2072 / IS-1294	1 35 25-35
6	Final Color Shade	DARK ADMIRALTY GREY- Shade No- 632	50-70

SI NO	DESCRIPTION	QTY	UNIT	REMARKS
1	ISA-100X100X8	8	THK. PL.	
2	ISMC 75x40	6	THK. PL.	
3	ISA-75X75X8	8	THK. PL.	
4	ISMC 75x40	6	THK. PL.	
5	ISMC 75x40	6	THK. PL.	
6	ISMC 75x40	6	THK. PL.	
7	ISMC 75x40	6	THK. PL.	
8	ISMC 75x40	6	THK. PL.	
9	ISMC 75x40	6	THK. PL.	
10	ISMC 75x40	6	THK. PL.	
11	ISMC 75x40	6	THK. PL.	
12	ISMC 75x40	6	THK. PL.	
13	ISMC 75x40	6	THK. PL.	
14	ISMC 75x40	6	THK. PL.	
15	ISMC 75x40	6	THK. PL.	
16	ISMC 75x40	6	THK. PL.	
17	ISMC 75x40	6	THK. PL.	
18	ISMC 75x40	6	THK. PL.	
19	ISMC 75x40	6	THK. PL.	
20	ISMC 75x40	6	THK. PL.	

NOTE:-
 01. ALL DIMENSIONS ARE IN MM U.O.S.
 02. TUBE THICKNESS WILL BE 4.5 MM WITHOUT NEGATIVE TOLERANCE.
 03. ALL IDLER TUBE MATERIAL ERW AS PER IS:9295, (YST-210)-1983.
 04. BEARING LIFE IS 30000 WORKING HOURS, <B-10>.
 05. BEARING SIZE 6207-Z C3 CLEARANCE AND (MAKE-SKF/FAG/NBC).
 06. FRICTION FACTOR MAX 0.015 AS PER IS 11592-2000.
 07. IDLER ARE DUST PROOF WATER PROOF & WEATHER PROOF.
 08. ALL IDLER ARE MANUFACTURED AS PER IS:8598-1987.
 09. SHAFT MATERIAL EN-8/C-40/C-45 BRIGHT BAR AS PER BS:970-1983/IS:1570-1979.
 10. TOTAL INDICATOR READING <TIR> ON IDLER OD, WHEN ROTATED TO CHECK RUNOUT AS PER IS:8598-1987.
 11. PAINTING WILL BE AS PER CONTRACT SPECIFICATION GID-208-ME-ECS-A-451.5-REV-2, TESTING AND INSPECTION WILL BE DONE AS PER APPROVED QAP .
 12. SEALING -GREASE PACKED AND SEALED FOR LIFE LITHIUM BASE GREASED TO BE USED.
 13. IDLERS ARE DROP IN TYPE & ROLLS CAN BE REMOVED WITHOUT DISMANTLING THE BRACKET FROM THE CONV. STRUCTURE.
 14. ALL ROLLS ARE INTERCHANGEABLE FOR THE SAME BELT WIDTH.
 15. IDLERS ARE PROVIDED WITH MULTI LABYRINTH SEALING.
 16. ALL FILLET WELD ARE 4 MM (MINIMUM).
 17. FOR CROSS SECTION DRAWING OF ROLL ASSY, PLEASE REFER DRG. NO.- AAC/BGRESL/RR/016.
 18. ALL SHARP CORNERS TO BE GROUND SMOOTH.
 19. ALL THE TESTING TO BE DONE AS PER IS:8598-1987 .
 20. FOR PIVOT BEARING HOUSING & GUIDE ROLLER REFER DRG. NO.- AAC/BGRESL/PBHGR/017.

REV. NO.	DATE	DESCRIPTION	DESIGN	DRAWN	CHKD.	APP.
B	10.06.16	REVISED AS MARKED	MANOJ	MANOJ	MANOJ	MANOJ
A	06.06.16	REVISED AS MARKED	MANOJ	MANOJ	MANOJ	MANOJ
O	23.05.16	FIRST SUBMISSION	MANOJ	MANOJ	MANOJ	MANOJ
		DETAIL OF REVISION	DESIGN	DRAWN	CHKD.	APP.

Painting Specification:-

SL.NO	TYPE	TYPE OF PREPARATION	REFERENCE STANDARD
1	Grade of Surface Preparation	Power Tool Cleaning Wire Wheel / Wire Brush	SSS-3
2	Primer Coat	Light Grey Zinc Chromate as per IS-2072 / IS-1294	Total DFT (microns)
3	Final Coat	Spinach Green paint as per IS-2072 / IS-1294	2 35 70
4	Primer Coat	Light Grey Zinc Chromate as per IS-2072 / IS-1294	1 35 25-35
5	Final Coat	Spinach Green paint as per IS-2072 / IS-1294	1 35 25-35
6	Final Color Shade	DARK ADMIRALTY GREY- Shade No- 632	50-70

Extent of Swivel

A. ADAK & CO.
 BALITKURI, HOWRAH-71113.

CLIENT:- BGR ENERGY SYSTEMS LIMITED

JOB No.: _____

NAME	DESIGN	DRAWN	CHKD.	APP.
MANOJ	MANOJ	MANOJ	MANOJ	MANOJ
MANOJ	MANOJ	MANOJ	MANOJ	MANOJ
MANOJ	MANOJ	MANOJ	MANOJ	MANOJ
MANOJ	MANOJ	MANOJ	MANOJ	MANOJ

TITLE: G.A OF S.A. SINGLE ROLL RETURN IDLER

DRAWING NO.:- AAC/BGRESL/SASPRI/09

SCALE - NTS **SHEET** - 2 OF 3 **PAGE** - A3

CAD SOFTWARE - AutoCAD