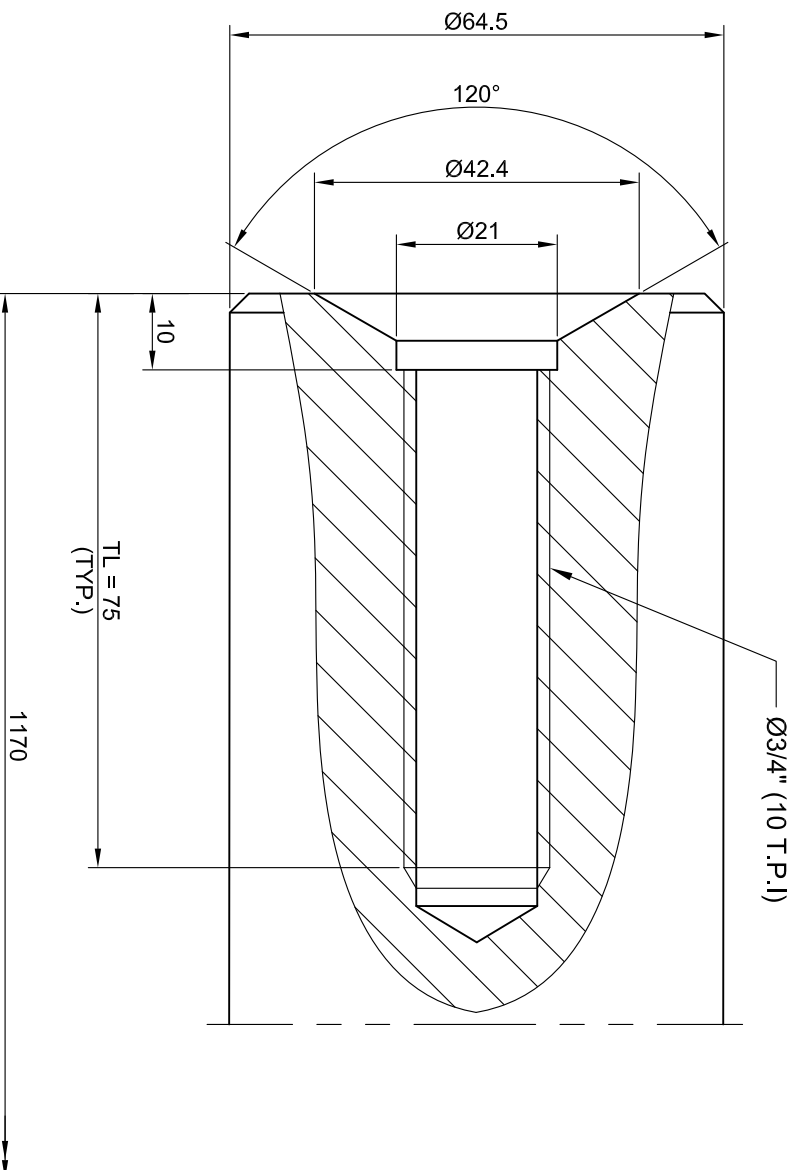


(SCALE - 1:1)



DETAIL - A
(SCALE - 1:1)

- NOTE-**
- ALL DIMENSIONS ARE IN mm ONLY.
 - REMOVE ALL SHARP EDGES & BURRS.
 - ALLOWABLE DEVIATIONS FOR DIMENSIONS WITHOUT SPECIFIED TOLERANCE SHOULD BE AS PER IS : 2102/1993(PART-1);MEDIUM.
 - WELDING PROCEDURE TO BE AS PER IS : 816/1969 AND IS : 9595/1996.
 - WELDING ELECTRODE TO BE USED AS PER IS:814/2004.
 - CENTRE HOLE AS PER IS : 2473/1975, TYPE - A.

($\sqrt{0.4}$) ($\sqrt{1.6}$)

1	SUSPENSION BAR - Ø64.5 x 1170 LG.	01	40 C8	IS: 1570(II)/1979
ITEM NO.	REVISION NOTE	QTY.	MATERIAL	REMARKS
REV. NO.	DATE	REVISION NOTE		
DRN.	DATE	DRN.	CHD.	APPD.
DRN.	DATE	DRN.	CHD.	APPD.
CHD.	DATE	REVISION NOTE		
CHD.	DATE	DRN.	CHD.	APPD.
APPD.	DATE	REVISION NOTE		
APPD.	DATE	DRN.	CHD.	APPD.
SCALE - AS SHOWN		DRG. NO. :- OPGC_CHP_SPR_A3_6151		
		REVISION		

SIVASAKTHI POWER SERVICES PVT. LTD.
Plot No - 99, Sowbernika Garden, Cuddalore Main Road, Ariyankuppam,
Pondicherry - 605007.

ORISSA POWER GENERATION CORPORATION LTD.
(A JOINT VENTURE OF GOVT. OF ORISSA AND AES CORP., USA)
IB THERMAL POWER STATION, BANHARPALLI, ORISSA.

TITLE:- SUSPENSION BAR 1170 LG.

DRG. NO. :- OPGC_CHP_SPR_A3_6151