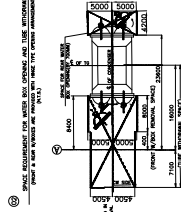
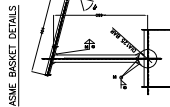
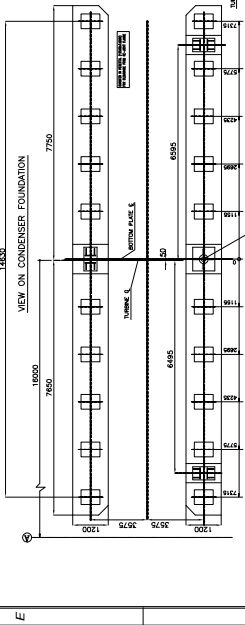
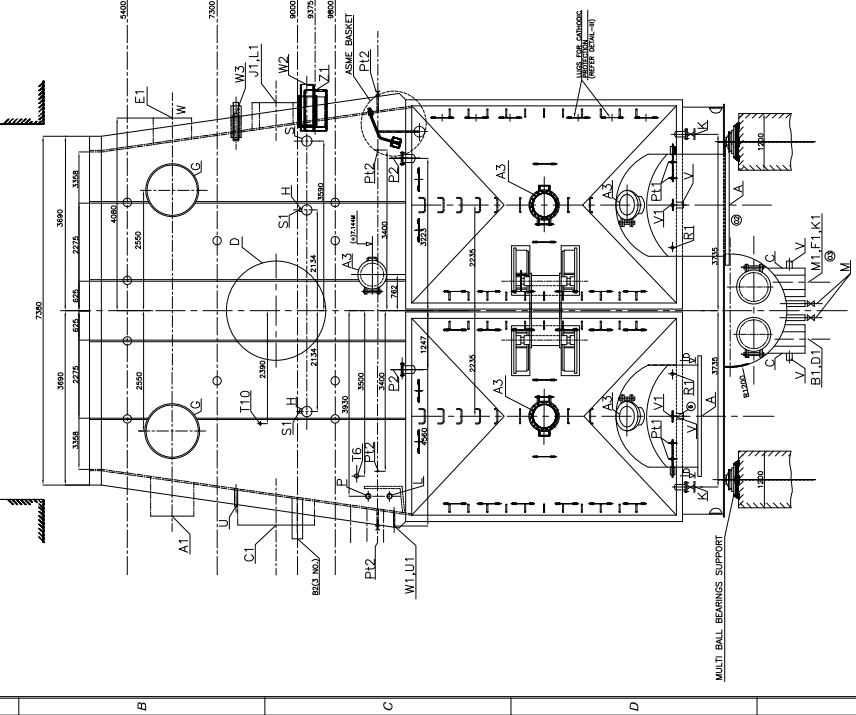


01601070070C203

REV. 03

FRONT W/BOX SIDE VIEW



LIST OF CONNECTIONS.

Table with columns: REF, SIZE, TYPE, FLANGE DETAIL, TO, FROM, DESCRIPTION, QTY, REMARKS. Lists various pipe and valve connections for the condenser.

LIST OF FITTINGS / INSTRUMENTS.

Table with columns: SIZE, DESCRIPTION, QTY, TYPE, REMARKS. Lists various fittings and instruments used in the condenser.

LIST OF MATERIALS (BASIS PARTS)

Table with columns: SLACK, DESCRIPTION, MATERIAL. Lists the materials used for various parts of the condenser.

DESIGN DATA

- Technical specifications including cooling water flow, condenser inlet temperature, and design parameters.

DESIGN CONDITION

- Operating conditions for design, including pressure, temperature, and flow rates.

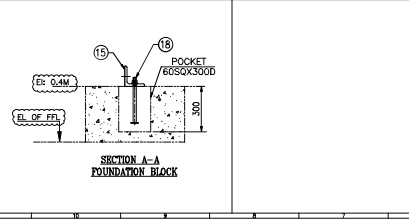
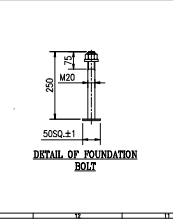
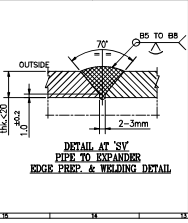
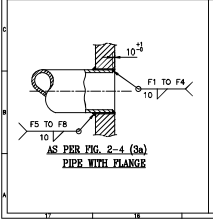
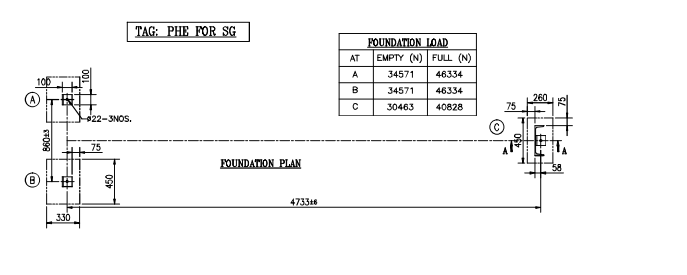
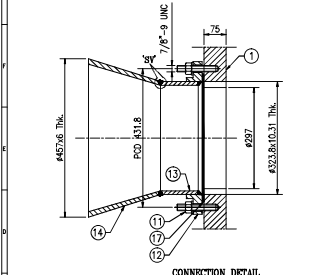
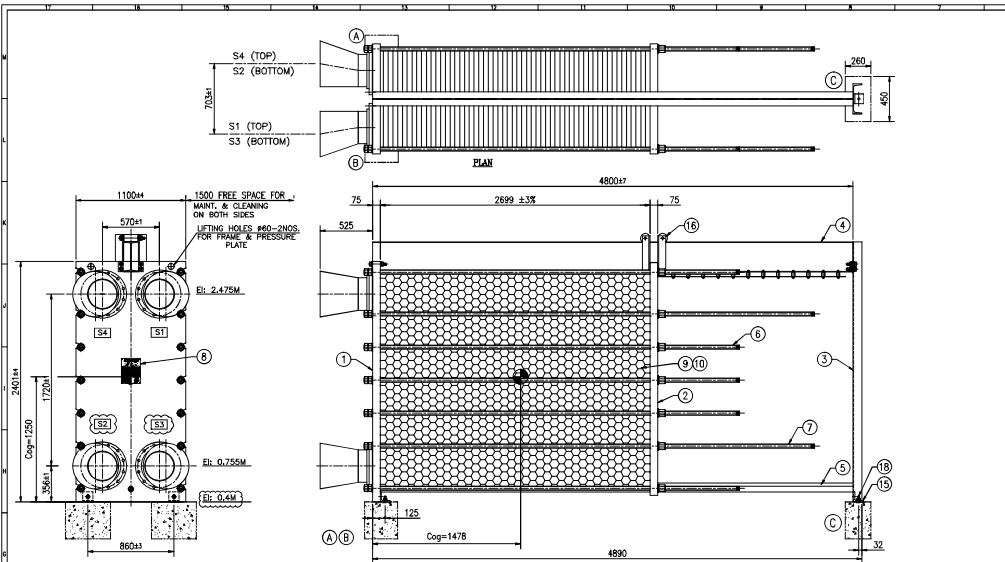
NOTES

- Notes detailing construction requirements, material specifications, and assembly instructions.

PAINTING

- Painting specifications for different parts of the condenser, including primer and finish requirements.

Project information including drawing title, client details (OISHA POWER GENERATION CORPORATION LIMITED), and project location (IB THERMAL POWER STATION, BANHARALI).



NO. OF SHEETS		S. NO. (TOP)		S. NO. (BOTTOM)	
1	1	1	1	1	1

NO.	DESCRIPTION	QTY	UNIT	REMARKS
19	RATCHET SPANNER	1	NO	LOOSE SUPPLY
18	FOUNDATION BOLTS	3	NO	LOOSE SUPPLY
17	NOZZLE GASKET	4	NO	DN500 #100
16	ROLLER ASSEMBLY	1	CS	PAINTED
15	FOUNDATION ANGLE	3	IS 2062, Gr.B	7% PLATED
14	ECCENTRIC EXPANDER	4	IS 3088, Gr.B	DN500 ASME #150
13	CONNECTION PIPE	1	IS 3088, ERW	DN500 SCH40
12	CONNECTION FLANGE	4	IS 2062, Gr.B	DN500 ASME #150
11	LIQUID/PART/FANHER	148	IS 2062, Gr.B	7% PLATED
10	GASKETS	892	Nitrile Rubber	STD.
9	H.T. PLATES	892	SS 216L	0.6mm THK.
8	DATA PLATE	1	SS 216L	Term. THK.
7	FASTENING BOLT	4	IS 1902, Gr.A	M30x3750 LG. 7% PLATED
6	FASTENING BOLT	10	IS 1902, Gr.A	M30x3750 LG. 7% PLATED
5	PIPE ASSEMBLY	1	ERW	DN500 LG.
4	PIPE ASSEMBLY	1	ERW	DN500 LG.
3	SURF. COLLUMN	1	IS 2062, Gr.B	SMC300
2	PRESSURE PLATE	1	IS 2062, Gr.B	75 THK. PAINTED
1	FRAME PLATE	1	IS 2062, Gr.B	75 THK. PAINTED

BILL OF MATERIAL	
SERIAL NO.	QTY
1	1
2	1
3	1
4	1
5	1
6	1
7	1
8	1
9	1
10	1
11	1
12	1
13	1
14	1
15	1
16	1
17	1
18	1
19	1

SERIAL NO.	QTY	CUSTOMER	DATE
1	1	Bharat Heavy Electricals Limited	27.03.2015
2	1		
3	1		
4	1		
5	1		
6	1		
7	1		
8	1		
9	1		
10	1		
11	1		
12	1		
13	1		
14	1		
15	1		
16	1		
17	1		
18	1		
19	1		

NO.	DESCRIPTION	BY	DATE
1	FR. PLATE ACC. & THERMAL DATA REWID.	PCB	24.03.15
2	REVISED AS SHOWN	PCB	24.03.15
3	DESCRIPTION	BY	DATE

DO NOT SCALE, IF IN DOUBT ASK.

TRANTER INDIA PRIVATE LIMITED

1 OF 1